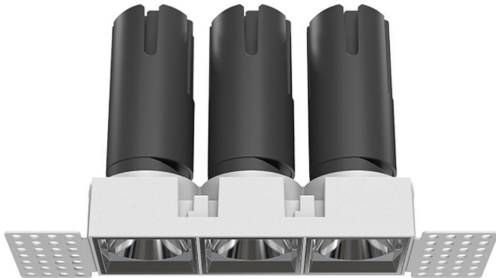


Trimless Recessed Spotlight

Product Code

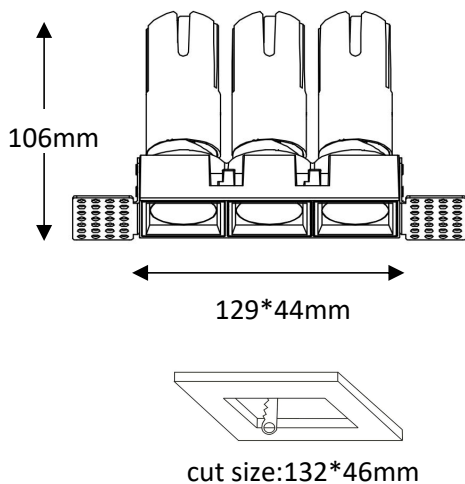
OPTIMSL12BS3*9W220VB

OPTIMSL12BS3*9W220VBD



IP rating	54
Ik rating	8
Source type	Hight power LED
Source life time	>50,000h at 25°C ambient temperature
CRI	>90
Step McAdam	3
Source flux	3240 lm
Source efficiency	120 lm/W
Delivered flux	2160 lm
Delivered efficiency	80 lm/W
Input power	3*9W
Supply voltage	110~240V AC
Insulation Class	Insulation class I
Power supply	Lifud driver constant current
Material	Aluminum
Light colour/CCT	3000K/4000K/6000K
Beam angle	15°/24°/36°/55°
Mounting	Ceiling-recessed
Reflector color	Matte Black/Matte White/Sand Silver
Finishing	White and Dark grey

Technical drawing



Temperature limits

Working temperature	-30C° to +50C°
Storage temperature	-50C° to +80C°

Light control

ON/off,optional DALI dimming

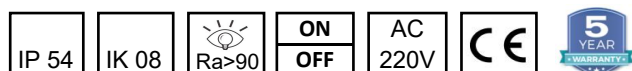
Construction

- The trimless downlight utilizes a one-piece die-cast aluminum body with thermal-conductive fins, ensuring rapid heat dissipation and invisible ceiling integration.
- Certified for direct contact with insulation

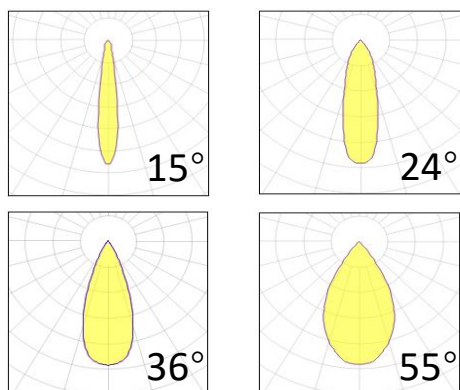
Warranty

- 5-year limited system warranty standard
- Warranty does not cover product failure due to an overvoltage event (power surge)
- For installations where power surge may be possible, NICOR recommends installing additional surge protection at the electrical distribution panel

Specifications



Photometrics



OPTILUX LIGHTING

Optilux reserves the right to make changes to this product at any time without notice and such change will be effective immediately.
Copyright © 2024 FANGTIAN TECHNOLOGY LLC.