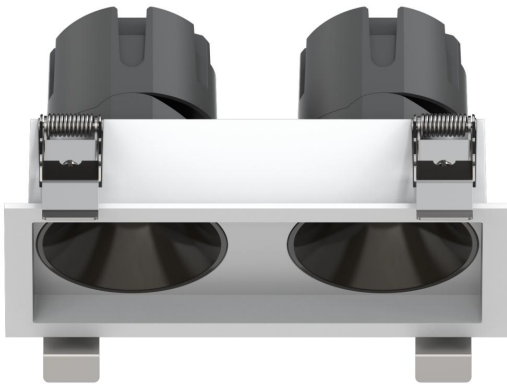


Recessed Spotlight

Product Code

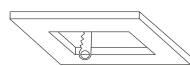
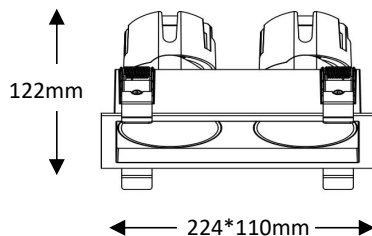
OPTISL2BS2*20W220VB

OPTISL2BS2*20W220VBD



IP rating	54
Ik rating	8
Source type	Hight power LED
Source life time	>50,000h at 25°C ambient temperature
CRI	>90
Step McAdam	3
Source flux	4800 lm
Source efficiency	120 lm/W
Delivered flux	3200 lm
Delivered efficiency	80 lm/W
Input power	2*20W
Supply voltage	110~240V AC
Insulation Class	Insulation class I
Power supply	Lifud driver constant current
Material	Aluminum
Light colour/CCT	3000K/4000K/6000K
Beam angle	15°/24°/36°/60°
Mounting	Ceiling-recessed
Reflector color	Matte Black/Matte White/Sand Silver
Finishing	White and dark grey

Technical drawing



cut size:209*98mm

Temperature limits

Working temperature	-30C° to +50C°
Storage temperature	-50C° to +80C°

Light control

ON/off,optional DALI dimming

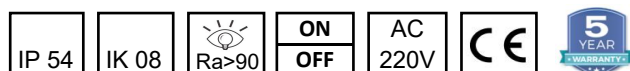
Construction

- Cast aluminum trim routes heat away from electrical components
- Adjustable, spring loaded retention tabs ensure secure fixture retention
- Certified for direct contact with insulation

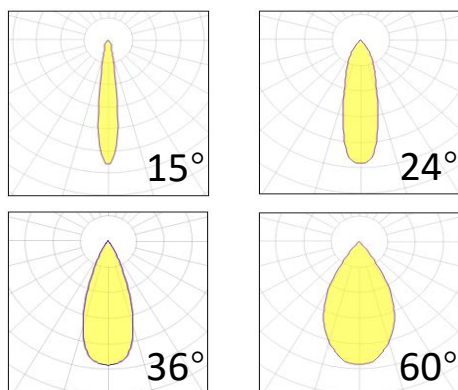
Warranty

- 5-year limited system warranty standard
- Warranty does not cover product failure due to an overvoltage event (power surge)
- For installations where power surge may be possible, NICOR recommends installing additional surge protection at the electrical distribution panel

Specifications



Photometrics



OPTILUX LIGHTING

Optilux reserves the right to make changes to this product at any time without notice and such change will be effective immediately.
Copyright © 2024 FANGTIAN TECHNOLOGY LLC.