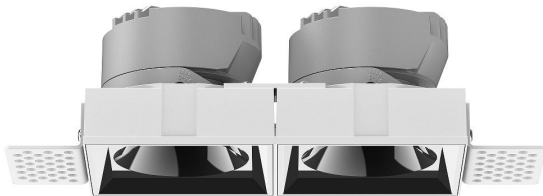


Trimless Recessed Spotlight

Product Code

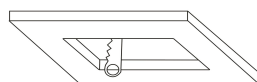
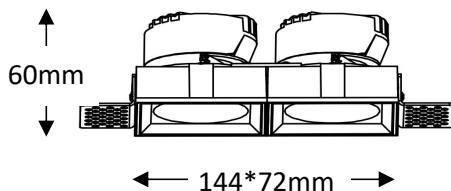
OPTISL16AS2*15W220V

OPTISL16AS2*15W220VD



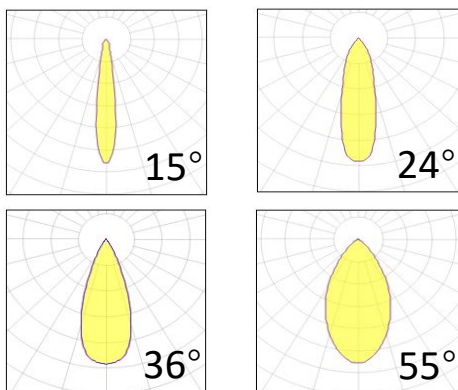
| | |
|----------------------|--------------------------------------|
| IP rating | 54 |
| Ik rating | 8 |
| Source type | Hight power LED |
| Source life time | >50,000h at 25°C ambient temperature |
| CRI | >90 |
| Step McAdam | 3 |
| Source flux | 3600 lm |
| Source efficiency | 120 lm/W |
| Delivered flux | 2400 lm |
| Delivered efficiency | 80 lm/W |
| Input power | 2*15W |
| Supply voltage | 110~240V AC |
| Insulation Class | insulation class III |
| Power supply | Lifud driver constant current |
| Material | aluminum |
| Light colour/CCT | 3000K/4000K/6000K |
| Beam angle | 15/24/36/55° |
| Mounting | ceiling-recessed |
| Reflector color | Black/White/Silver |
| Finishing | white/black |

Technical drawing



cut size:145*73mm

Photometrics



Temperature limits

| | |
|---------------------|----------------|
| Working temperature | -30C° to +50C° |
| Storage temperature | -50C° to +80C° |

Light control

ON/off,optional DALI dimming

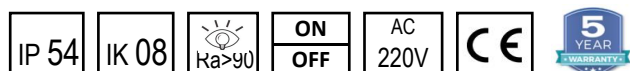
Construction

- Cast aluminum trim routes heat away from electrical components
- Adjustable, spring loaded retention tabs ensure secure fixture retention
- Certified for direct contact with insulation

Warranty

- 5-year limited system warranty standard
- Warranty does not cover product failure due to an overvoltage event (power surge)
- For installations where power surge may be possible, NICOR recommends installing additional surge protection at the electrical distribution panel

Specifications



OPTILUX LIGHTING

Optilux reserves the right to make changes to this product at any time without notice and such change will be effective immediately.
Copyright © 2024 FANGTIAN TECHNOLOGY LLC.