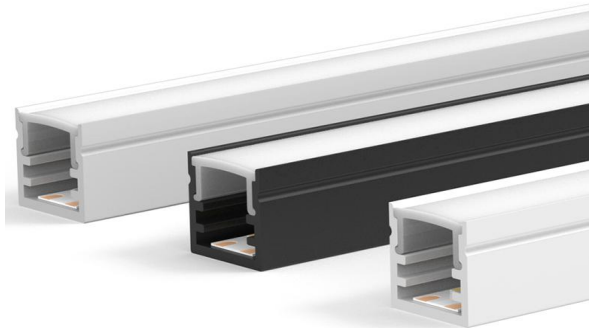


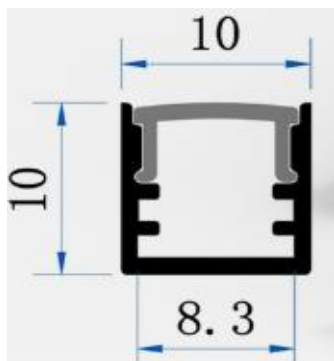
## LED Profile Light

Product Code  
**ARCIPL4A10W24V**



IP rating	20
Ik rating	6
Source type	Hight power LED
Source life time	>50,000h at 25°C ambient temperature
CRI	>80
Step McAdam	3
Source flux	1200 lm
Source efficiency	120 lm/W
Delivered flux	1000 lm
Delivered efficiency	100 lm/W
Input power	10W/M
Supply voltage	DC24V
Insulation Class	insulation class III
Power supply	constant voltage driver
Material	aluminium+PC
Light colour/CCT	2700K/3000K/4000K/6000K
Beam angle	diffuse
Mounting	recessed/surface mount
Reflector color	-
Finishing	black/silvery

## Technical drawing



## Temperature limits

Working temperature	-30C° to +50C°
Storage temperature	-50C° to +80C°

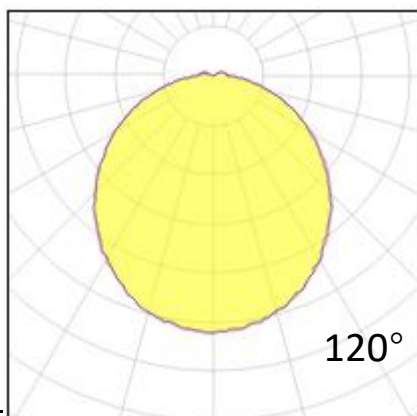
## Light control

ON/off,optional DALI dimming

## Construction

Aluminum shell, anodized, rust and corrosion resistant, fast heat dissipation, PC lampshade, stainless steel buckle, can be cut according to requirements

## Photometrics



## Warranty

- 5-year limited system warranty standard
- Warranty does not cover product failure due to an overvoltage event (power surge)
- For installations where power surge may be possible, NICOR recommends installing additional surge protection at the electrical distribution panel

## Specifications

