

Recessed Spotlight

Product Code

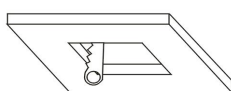
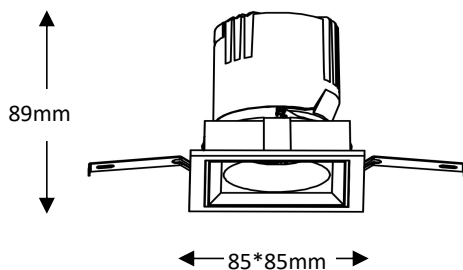
OPTISL7AS15W220V

OPTISL7AS15W220VD



IP rating	54
Ik rating	8
Source type	Hight power LED
Source life time	>50,000h at 25°C ambient temperature
CRI	>90
Step McAdam	3
Source flux	1800 lm
Source efficiency	120 lm/W
Delivered flux	1200 lm
Delivered efficiency	80 lm/W
Input power	15W
Supply voltage	220~240V AC
Insulation Class	insulation class III
Power supply	Lifud driver constant current
Material	aluminum
Light colour/CCT	3000K/4000K/6000K
Beam angle	15°/24°/36°/55°
Mounting	ceiling-recessed
Reflector color	Black/White/Silver
Finishing	white/black

Technical drawing



cut size:75*75mm

Temperature limits

Working temperature	-30C° to +50C°
Storage temperature	-50C° to +80C°

Light control

ON/off,optional DALI dimming

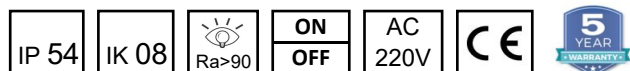
Construction

- Cast aluminum trim routes heat away from electrical components
- Adjustable, spring loaded retention tabs ensure secure fixture retention
- Certified for direct contact with insulation

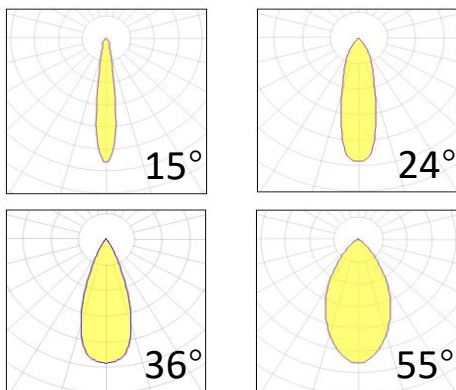
Warranty

- 5-year limited system warranty standard
- Warranty does not cover product failure due to an overvoltage event (power surge)
- For installations where power surge may be possible, NICOR recommends installing additional surge protection at the electrical distribution panel

Specifications



Photometrics



OPTILUX LIGHTING

Optilux reserves the right to make changes to this product at any time without notice and such change will be effective immediately.
Copyright © 2024 FANGTIAN TECHNOLOGY LLC.