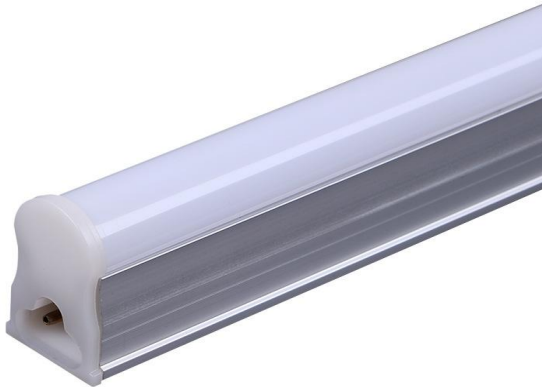


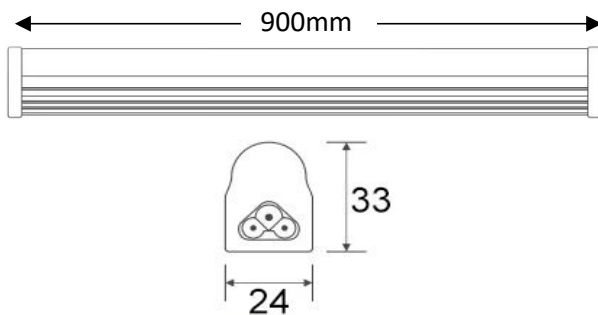
## T5 tube light

Product Code  
**OPTIT5LT14W220V**



IP rating	40
Ik rating	6
Source type	Hight power LED
Source life time	>50,000h at 25°C ambient temperature
CRI	>80
Step McAdam	3
Source flux	1960 lm
Source efficiency	140 lm/W
Delivered flux	1680 lm
Delivered efficiency	120 lm/W
Input power	14W
Supply voltage	220~240V AC
Insulation Class	insulation class III
Power supply	Built in constant current
Material	aluminum+PC
Light colour/CCT	3000K/4000K/6000K
Beam angle	diffuse
Mounting	surface mount
Reflector color	-
Finishing	silvery

## Technical drawing



## Temperature limits

Working temperature	-30C° to +50C°
Storage temperature	-50C° to +80C°

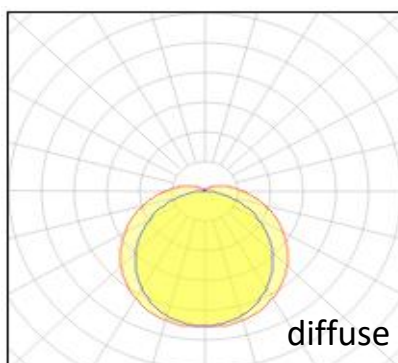
## Light control

ON/off,DALI

## Construction

Aluminum shell, high transparency PC lampshade, not prone to yellowing, built-in constant current drive, long service life

## Photometrics



## Warranty

- 5-year limited system warranty standard
- Warranty does not cover product failure due to an overvoltage event (power surge)
- For installations where power surge may be possible, NICOR recommends installing additional surge protection at the electrical distribution panel

## Specifications

